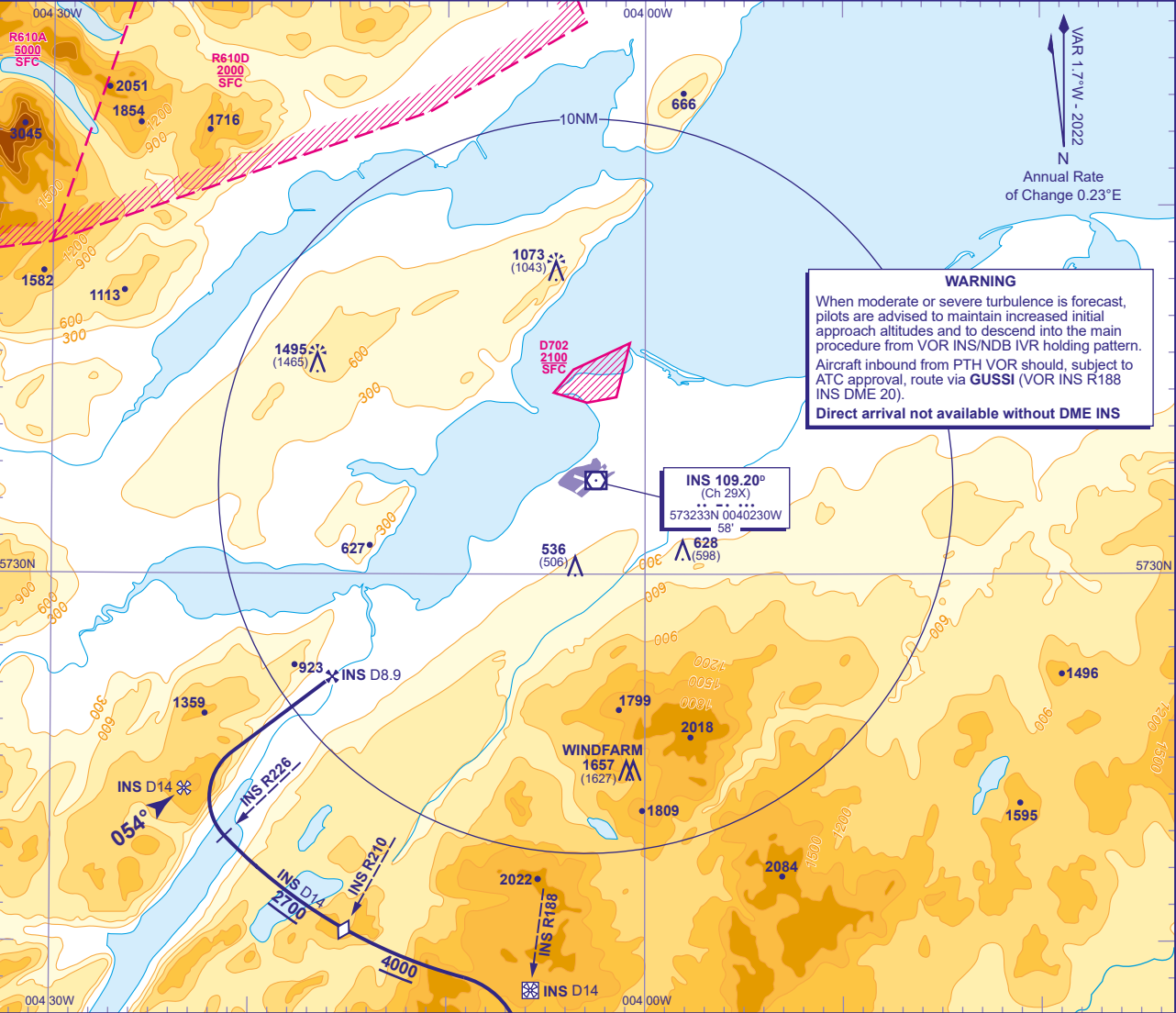


INSTRUMENT APPROACH CHART - ICAO

INVERNESS
Direct Arrivals
VOR/DME
RWY 05
(ACFT CAT C)

<div><div><div>49305056</div><div>090°081°270°</div></div><div>MSA 25NM VOR INS</div></div>	TWR 118.405	INVERNESS TOWER	AD ELEVATION 31	TRANSITION ALTITUDE 3000
	RAD 122.605	INVERNESS RADAR	THR ELEVATION 30	
	ATIS 109.200	INVERNESS INFORMATION	OBSTACLE ELEVATION 1495 AMSL (1465) (ABOVE THR)	
			BEARINGS ARE MAGNETIC	



Arriving on N560 Northbound
Arrival from the south on VOR INS R188 (QDM 008°) **not below 5800**. Request ATC approval for DME arc arrival when within INS DME 40. After passing INS DME 25, with ATC approval, descend **not below 5000**. From INS DME 16 turn left to establish on INS DME 14 arc clockwise. When established, descend along the arc **not below 4000**. After crossing step down VOR INS R210, continue descent to **2700(2670)**, then from lead VOR INS R226 turn right onto extended FAT. From FAF INS DME 8.9 at **2700(2670)**, continue with VOR/DME final approach.